

Taking Esthetic Control

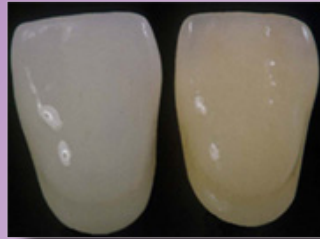


Dr. Bruce Crispin

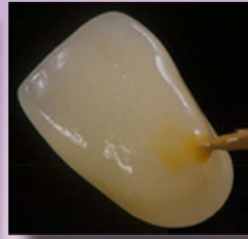
Color Management: Chairside Ceramic Color Modification

Presented by: Dr. Bruce Crispin

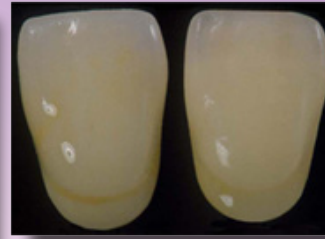
Esthetic Professionals Dental Education is pleased to present this unique one of a kind program. It will teach participants how to modify esthetic results and add a open proximal contact like the labs do. Sending restorations back to the lab eliminates your profit margin. Learn how to gain esthetic control in your practice, improve your esthetic results, impress your patients, get more referrals, and have more fun. This course will show you how easy it is to master color perception and communication plus extrinsic ceramic staining materials and techniques. It's so easy, you'll wonder why you haven't done it years sooner. Techniques and materials taught in this program are easily mastered by team members.



Pre-Stain



Staining Process



Post-Stain

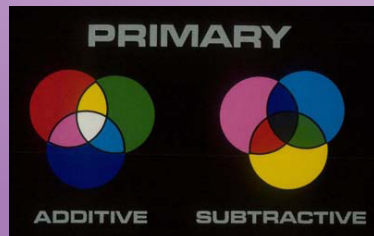
Topics:

- Understanding light and color, color perception, shade selection, and color mapping
- Additive and subtractive color systems (how to control light and perception)
- Extrinsic ceramic staining techniques for ceramometal, conventional ceramics,
- Core and pressed ceramics
- Shade modification, translucency alteration, maverick colors and special characteristics
- Custom shade guides, laboratory communications

(Lecture/Demo/Hands-On)

Hands-On:

- Modifying chroma, hue and value of ceramic restorations
- Adding maverick colors, cracks and opacities
- Matching adjacent teeth
- Shade modifications of an actual ceramometal crowns
- Add a ceramic contact



Attention:
CAD-CAM dentists!
One of the only courses
of its kind!

Tuition: 8 CEU's

8am-5pm

May 27, 2016

\$395 for dentist + 2 staff members!

Incentives:

50% off (base tuition) if repeating the course.
Group (2 or more dentists) 25% discount each.



Esthetic Professionals
Dentistry's Total Solution
Call Today (818) 654-7102
EstheticProfessionals.com
18981 Ventura Blvd. Tarzana, CA 91356

TEAM
PROGRAM!
Tuition Includes
2 Staff
Members!